



I Grew Up in the 80s

Exhibition Activity Booklet



IT'S FRESH!



FREE EXHIBITION
until 13th March

Check out our website for our opening time
experience-barnsley.com

   **#IGUI80S**

Meet the 1980s Barnsley Museums Team

Some of our team were brave enough to share photos of themselves taken in the 80s. Because we are a large team we can only fit in a few, must be all the big hair.

Want to see more? Look out for the Barnsley Museums 'Wheel of Fortune' game on our Social Media channels



John Tanner



Natalie Murray



Michael Hardy



Paul Stebbing



Liane Holdsworth



Lynn Dunning



Tracey Hebron



Steven Skelley



Sarah Taylor



Sue Thiedeman



@experiencebarnsley #IGUI80s

MAKE YOUR OWN PAC-MAN BOARD GAME

MAKE THE GAME:

To make 2-4 Ghosts

Cut out the pointy middles of a cardboard egg box. Paint your ghost.

When it's dry, draw or stick on googly eyes.

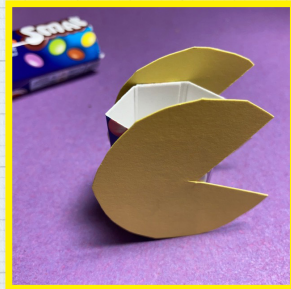


To make 2-4 Pac-Men

Cut a Smartie tube.

Make two card circles by drawing around the base of something circular like a glass, cut out and cut out triangles for the mouth.

Stick or draw on some eyes then stick the circles to the tube.



YOU WILL NEED:

- ✓ Cardboard egg boxes
- ✓ Card circles as counters
- ✓ Smartie tubes
- ✓ A glue stick
- ✓ Coloured card
- ✓ Scissors
- ✓ Black card
- ✓ Pencil
- ✓ Paint/ brushes
- ✓ Ruler
- ✓ Googly eyes/ Glue
- ✓ Sticker dots or a small pom pom and peg
- ✓ A dice

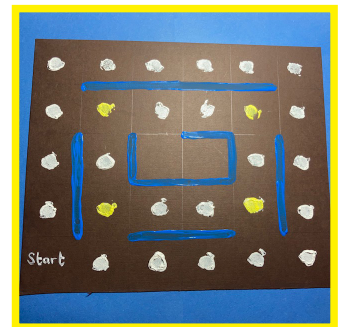
To make your board

Draw a grid on a big piece of card- black if you have it. (Be sure that your ghosts and Pac-Men figures fit in each square).

Add dots in the centre of each square- you could use coloured dot stickers, or print using paint, a pom pom and a peg.

Add blue lines, a start square and a home in the middle for ghosts like in the picture.

Use smarties or card circles as counters. You need the same number as squares on your board. Remember you need 4 special ghost proof counters- maybe another colour or different type of chocolate.



HOW TO PLAY YOUR PAC-MAN GAME

For 2 or more players

The aim of the game for Pac-Man is to collect as many counters as possible and evade the ghosts.

The aim of the game for ghosts is to catch as many Pac-Men if possible.

Choose your pieces. 2 players will both need a Pac-Man and a ghost so you can alternate playing between the two. 3 or more players choose if you are going to be a Pac-Man or a ghost. You need a minimum of 2 Pac-men and 1 ghost.

Place Pac Men at the start & ghosts in the centre, and counters on all the dots-. Remember to put your 4 special ghost proof counters on the yellow dots.

Take turns to roll the dice to see who goes first. Highest number is first to go.

Take turns to roll to move around the board.

Pac-Man pieces move around and collect counters/ smarties. If you collect one of the special ghost proof counters you can survive a ghost landing on you but then

must put the special counter back on the yellow dot on the board and the ghost has to go back to the home area in the middle.

Ghosts move around and try to land on Pac-Men. If your ghost lands on a Pac-Man you win all the counters the Pac-Man has collected and the Pac-Man is out of the game.

The game is over when either only the ghosts are left or the Pac-Men have collected all of the counters. See who has won by seeing who has the most counters.

Transformers was an American animated television series which aired from 1984, based on the Hasbro toys. It was a really successful marketing gimmick with kids across the world begging their parents to own one.

The cartoon depicted a war between giant robots that could transform into vehicles.

Optimus Prime was the leader of the Autobots leading them against the evil Decepticons.

Why not have a go at making your own Optimus Prime costume, to transform from a truck into a robot and back again?

Here are some simple instructions of how to make a basic costume out of cardboard boxes, use your imagination and things you have at home to make this simple costume into something amazing!

1. Start with a large box to fit a person. Add arm and head holes. This will be the main body of the truck.



2. Add a medium box on top. This needs to be at least the height of the person's head. Leave one flap on to use as a hinge and tape down securely with strong tape. This smaller box will be the cab of your truck.



3. Detail of flap.



4. Spray or paint your truck Start adding details like the fender at the front. Use pizza boxes to make your wheels. Draw around a plate, then cut out 6 wheels. Paint your wheels and attach them to the box. Think about painting on windows or adding exhaust pipes and other interesting details you can think of. Be imaginative.



5. The finished truck with person inside.



6. Optimus Prime as a robot!



GIANT LION BAR



1. Line your baking tin with the greaseproof paper.
2. Melt 100g of milk chocolate with 15g of dark chocolate. (If using a microwave ...check every 30 seconds until the chocolate is melted.
3. Pour the chocolate into the bottom of the large tin. Using the spatula spread the chocolate out along the bottom of the tin.
4. Chill the chocolate base for 30 mins.
5. To make the ganache. Heat the chocolate and cream in the microwave for 30 seconds. (It doesn't want to be too thick so add extra cream while mixing with the whisk) and the. Cool the ganache in the fridge. 30 mins.
6. Take the chocolate base out of the fridge and remove from tin.
7. Using a spatula spread a thin layer of the ganache to the chocolate base.
8. Add the wafers. Place the wafers next to each other lengthways...leaving a 1cm space all the way around the chocolate base. Use a brush and spread a thin layer of ganache on top of the layer of wafers. We used 10 per layer.
9. Build up three layers of the wafers.
10. Chill in the fridge 30 mins.
11. **Make a caramel.**
Mix the water and the sugar with the cream of tartar. Bring to 170C temperature checking with the thermometer so it doesn't burn.
Take off the heat, leave to cool a few mins, stir in the cream then mix using the whisk.
Transfer to a bowl and set to the side to cool.
12. Using the spatula add a thin layer of the Caramel to the wafers.
13. Use the brush and add a thick layer of caramel to the whole block of wafers... brush around all the sides and on the top of the bar.
14. Add the puffed rice.
15. Chill in the fridge 30 mins.
16. Melt 150g of the milk chocolate and 25g of dark chocolate together.
17. Line the baking tray, add three or supports turned upside down such as cups, bowls, jam jars.
18. Carefully place the bar onto the supports (we used cups) so the bar is fully supported and in the large baking tray to help catch the extra chocolate.
19. Drizzle the chocolate to the top and sides of the bar. Let the chocolate drip drizzle down the sides. Use a knife to add extra chocolate to cover the whole bar.
20. Chill in the fridge for an hour.
21. Wow!!! You have made it. At least 700g of lion bar to the usual 50g lion bar.

Allergens contains Milk, Wheat, unless using alternatives.

YOU WILL NEED..

- 30 vanilla cream wafers (sugar free) if you use the larger longer wafers you will need to cut each one to fit the width of your tin, leaving a 1 cm gap around the whole bar for the chocolate and puffed rice covering
- Dark chocolate 15g for the base and 50g for the rest of the bar (65g)

For the ganache

- White chocolate 100g white chocolate
- 6-7 tbs of double cream

For the bar

- 400g Milk chocolate (100g for the base and 300g for the rest of the bar)
- Puffed rice

For the Caramel

- 150g caster sugar
- 350ml water
- 3-5g of cream of tartar
- Approx. 350 ml double cream
- Large 30 cm long baking tin or mould
- Dish for melting chocolate
- Microwave or bain-marie to melt the chocolate
- Whisk
- Flat spatula
- Greaseproof paper
- Heavy based bottom pan
- Food thermometer
- Large baking tray
- Baking brush
- Spoon
- Three glass jars or cups all the same size



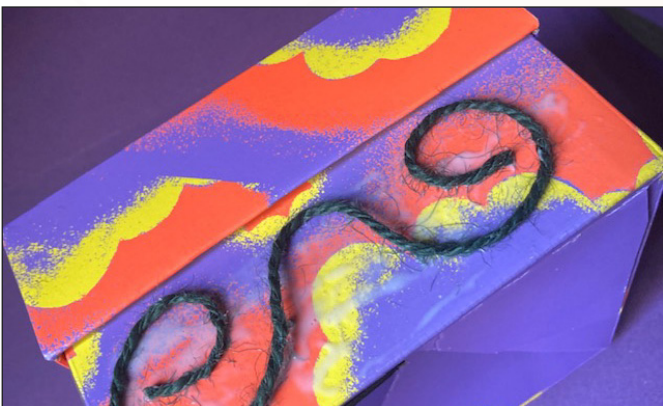
Indiana Jones first crashed into existence in 1981 with a film collaboration between Steven Spielberg and George Lucas, starring Harrison Ford as the title character.

From the first film “Indiana Jones and the Lost Ark” the format of daring adventure, legendary treasures and the victory of good over evil held audiences spellbound.

CAN YOU CREATE YOUR OWN INDIANA JONES ADVENTURE AT HOME?

- Start by making an obstacle course you can navigate around using objects in your house. Are your stairs a mountain? Can you make caves and tunnels under your table? Really use your imagination to be as creative as you can.
- Cut out the scavenger cards and hide to add to the adventure.
- Make a treasure map. Do ask a grown up to help make it look old by using tea bags to stain it and carefully burning the edges.
- Why not make your own legendary treasure box to discover by following the step by step instructions?
- Now! Challenge your family and friends to find all the scavenger cards and the treasure. Get ready... the adventure is about to begin!

HOW TO MAKE A TREASURE BOX



- 1.** Use PVA to stick string on your box in a pattern - both swirls and straight lines work well.



- 2.** When it's dry, paint your box gold (either spray paint or gold paint using a brush will work).



- 3.** Once the gold is dry add texture by applying brown paint with a dry brush.

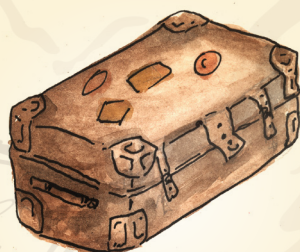


- 4.** Fill with treasure.

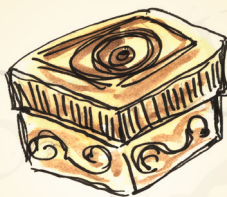
SCAVENGER CARDS



SKULL



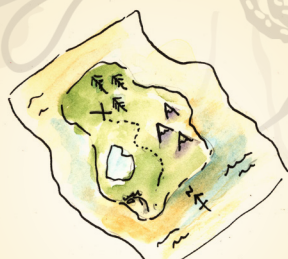
TRAVEL CASE



TREASURE BOX



INDIANA JONES HAT



TREASURE MAP



SNAKE



PLANE



COMPASS



BULL WHIP



CHALICE

BARNSLEY MUSEUMS

Your donations really help to keep us open, especially now.

If you enjoy this fabulous, free, venue and want to make sure it will always be there, please consider making a donation.

To donate, text the word **EXBARNSLEY** followed by the amount you wish to donate to **70085** eg. *to donate £5 text EXBARNSLEY5 to 70085*

Every little helps! Thank you!