



# BARNSELEY MUSEUMS

## Learn with Barnsley Museums: 2026-27



**Barnsley Museums provides innovative ways to explore our sites through engaging learning programmes which challenge and delight pupils of all ages. Be inspired by our unique buildings, landscapes and objects, and discover how arts and culture can support you to teach a Creative Curriculum.**

We can welcome you to our unique venues, deliver engaging outreach workshops at your school, live stream sessions virtually into your classroom, and provide individually-created loan boxes linked to your topic.

[learning@barnsley.gov.uk](mailto:learning@barnsley.gov.uk)

[www.barnsley-museums.com/schools](http://www.barnsley-museums.com/schools)

# TRIPS AND OUTREACH

## Local History

Trips:

### **World War Two: Sent to the Country – KS1/KS2 – Cannon Hall Museum, Park and Gardens – Full day workshop - £310 per class**

Pupils meet the Cook and Housekeeper at Cannon Hall and become evacuees for the day in this immersive workshop. They will take part in traditional wartime activities, view real and replica objects and discover how to make tasty treats, even during rationing!

- Pupils will learn about significant people, places and events in their locality after 1066
- Pupils will make a local history study



“This is always the children’s favourite trip and they remember it for many years to come!”

### **Victorian Kitchen – KS1/KS2 - Cannon Hall Museum, Park and Gardens – Full day workshop - £310 per class**

Your pupils will transform into Victorian servants for the day as they become immersed in history to help our Cook and Housekeeper prepare for the Master’s party. They will cook a meal on our Victorian range, take part in traditional activities, and take an historical tour of Cannon Hall.

- Pupils will learn about significant people, places and events in their locality after 1066
- Pupils will make a local history study



“The hands on experience was brilliant. Staff were really welcoming and helpful! You made it so immersive.”



### **Ancient Egypt: Cleopatra and the Queens of Egypt -KS2 – Experience Barnsley Museum – Half day workshop - £190 per class (available until February 2027)**

Explore the world of Ancient Egypt and discover more about Cleopatra’s incredible life and legacy in this special school workshop that is running in conjunction with Professor Joann Fletcher’s Cleopatra and the Queens of Egypt exhibition at Experience Barnsley. Pupils will step back in time as they explore the exhibition, view real and replica objects and take part in a range of interactive, sensory activities, including making an animal statue and papyrus bookmark.

- Pupils will learn about the achievements of the earliest civilizations
- Pupils will learn about the lives of significant individuals in the past who have contributed to national and international achievements.

## Trips:

### **Toys and Games – EYFS/KS1 – Experience Barnsley Museum – Half day workshop – £190 per class**

Help us find our toys and games that have escaped from the museum, play with old toys and find out how they worked, visit our museum exhibition, and make your own peg doll to take home.

- Pupils will learn about changes in living memory
- Pupils will explore and evaluate a range of existing products



### **Stone Age to Iron Age – Lower KS2 – Experience Barnsley Museum – Full or half day workshop - £310/£190 per class**

Bring prehistory to life as your class discovers how to be archaeologists for the day. Pupils will understand chronology, discover the differences between the Stone Age, Bronze Age and Iron Age, examine replica objects, and take part in traditional prehistoric activities such as creating cave art and food ‘foraging’. Pupils will explore the Experience Barnsley exhibition.

- Pupils will learn about changes in Britain from the Stone Age to the Iron Age

“ I liked how hands on the workshop was. The small groups helped keep the children engaged and the staff were helpful and friendly. ”



**The Mill Mouse – EYFS/KS1 – Worsbrough Mill and Country Park – Half day workshop - £190 per class**

Using our bespoke story, ‘The Mill Mouse’, explore the Mill and follow the journey of wheat to flour. Discover how the Mill works, learn which foods are made from flour, and have a go at hands-on activities to support learning.

- Pupils will explore and use mechanisms, for example levers, sliders, wheels and axles
- Pupils will understand where food comes from
- Pupils will study a site dating from a period beyond 1066 which is significant in the locality



“ First hand experience was fab! We enjoyed looking around the mill and activities in the classroom were interactive. ”

**Field to flour – KS2 – Worsbrough Mill and Country Park – Half day workshop - £190 per class**

Explore the journey of wheat from field to flour in this hands-on workshop. Pupils will visit the Mill and discover how it works, find out all about the different foods that can be made from flour, and have a go at grinding their own flour from wheat.

- Pupils will understand seasonality and know where and how a variety of ingredients are grown, reared, caught and processed
- Pupils will explore the requirements of plants for life and growth
- Pupils will make a local history study
- Pupils will recognise that some mechanisms, including levers, pulleys and gears, allow a smaller force to have a greater effect.

“ Fabulous interactive activities and knowledgeable guides. Children loved the experience in the Mill and the classroom. ”

# Science

Trips:



## **Earl Fitzwilliam: Raising water by fire – KS2 – Elsecar Heritage Centre – Half day workshop - £190 per class**

Explore Elsecar, learn about the Earl Fitzwilliam, and find out how the Newcomen Beam Engine works in this 2-hour STEM and Local History workshop. Pupils will investigate the Earl Fitzwilliam's purchase of the Newcomen Engine, handle real objects, view a working model engine demonstration and take a tour of the site to find out more about coal mining in the area.

- **Pupils will describe in simple terms how fossils are formed**
- **Pupils will compare and group materials together, according to whether they are solids, liquids or gases**
- **Pupils will observe that some materials change state when they are heated or cooled**
- **Pupils will study a site dating from a period beyond 1066 which is significant in the locality**
- **Pupils will make a local history study**



*“ We liked the different activities and using both indoors and outdoors. Thank you! Great, informative session ”*

## Outreach:

### **Stone Age to Iron Age – Lower KS2– Full or half day session – £320/£200 per class**

Bring prehistory to life in your classroom as your pupils become archaeologists for the day. They will understand the chronology of the prehistoric period, discover the differences between Stone Age, Bronze Age and Iron Age, categorise replica objects, and take part in traditional prehistoric activities such as making an arrowhead and food 'foraging'.

- Pupils will learn about changes in Britain from the Stone Age to the Iron Age



# ART AND DESIGN:

## Trips:

### **Portraits and self-identity – KS1/KS2 – The Cooper Gallery or Cannon Hall Museum, Park and Gardens – Half day workshop - £190 per class**

Pupils will become immersed in original works from the Cooper Gallery collection, or the De Morgan collection at Cannon Hall, learning new ways of looking at and interpreting art. Focussing on portraits by local artists, they will learn the basic principles of portraiture while developing their sketching skills.

- Pupils learn to use drawing, painting and sculpture to develop and share their ideas, experience and imagination.
- Pupils learn to improve their mastery of art and design techniques, including drawing, painting and sculpture with a range of materials; for example pencil, charcoal, paint and clay.



Ask us about adding Arts Award to these sessions

### **Look, Make, Print – KS1/KS2 – The Cooper Gallery – Full or half day workshop - £310/£190 per class**

Pupils will explore artwork from The Cooper Gallery collection, focussing on colour, line and shape before relocating to Experience Barnsley Museum to develop techniques to create their own linocut prints to take home.

- Pupils learn to improve their mastery of art and design techniques, including drawing, painting and sculpture with a range of materials



## Outreach:

### **Portraits and self-identity – KS1/KS2 - Half day session – £190 per class**

Your pupils will become artists for this two-hour session where they will learn the basics of portraiture including proportion and detailed drawing of facial features. They will develop and improve a range of drawing techniques whilst being inspired by works of art from the Cooper Gallery collection or the De Morgan collection at Cannon Hall.



- Pupils learn and improve their mastery of a range of art and design techniques
- Pupils will learn about the work of a range of artists, craft makers and designers





# SELF-LED RESOURCES

Barnsley Museums offers self-led visits to all of our sites free of charge. We ask all visiting groups, including self-led, to book with us in advance either via our website or by email. We offer lunch spaces for self-led groups at Worsbrough Mill and Experience Barnsley at a cost of £45. We have a variety of trails and resources which can be used to support your visit. These resources can also be used in addition to a half day workshop at one of our sites.

## Local History:

### **Miners' Strike trail – KS2 – Experience Barnsley – Free, please book in advance.**

Learn about the Miners' strike and Women Against Pit Closures movements in Barnsley and beyond with our trail and handling box, using real objects and archive materials. Have a go at creating your own political campaign.



### **Object trails – KS1/KS2 – Experience Barnsley – Free, please book in advance.**

Use our spotters guides and activity sheets to get to know the objects in Experience Barnsley better and discover more about local history.

## English:

### **Storytelling trails – KS1/KS2 – Worsbrough Mill and Country Park, Cannon Hall Museum, Park and Gardens, Elsecar Heritage Centre – Free, please book in advance.**

Let your imagination run wild with our spoken storytelling trails at Worsbrough Mill and Cannon Hall. Using our mystery character and object bags, as well as the inspirational outdoor settings of these magical sites, see what stories your pupils can come up with to develop back at school.



## Science:

### **Nature spotting trail – KS1/KS2 – Worsbrough Mill and Country Park – Free, please book in advance**

Explore Worsbrough Country Park with our self-led nature trail – how many animals can you spot around the reservoir? Record your findings in a tally chart to inspire maths lessons back at school.

## Art:

### **Art Sparks trail - KS1/KS2 - Cannon Hall - Free, please book in advance**

Explore Cannon Hall Country Park with our Art Sparks pack and let your pupils' creative juices flow. Link art and nature with wellbeing and getting outdoors.

### **Art trails – KS1/KS2 – Cooper Gallery – Free, please book in advance.**

Inspire your class on their visit to the Cooper Gallery with our suite of self-led trails including art techniques, imagination activities and looking at colour.



# LOAN BOXES

## Local History

**KS1/KS2 - £80 per half term**

### • Pupils will make a local history study

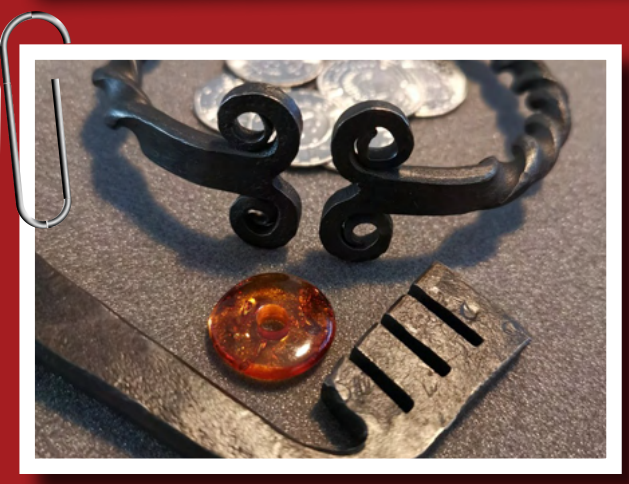
Explore a range of topics with our lovingly made handling boxes full of real and replica objects from the past. Each box comes with a teacher pack giving more information about the objects and their stories.

### Topics available:

- Coal mining
- Victorians
- WW2
- Toys
- Stone Age
- Anglo-Saxons
- Vikings
- Romans
- Ancient Egypt (available from June 2026)
- Medicine through time
- Industrial Barnsley (coal, glass and textiles)
- Houses and Homes

“ It’s a great resource and something really different. It gives you lots of background information and explains the different vocabulary really well. We are currently learning about the history of our local area and resources are often hard to find. This is great!

”



## LOCAL HISTORY SENSORY LOANS BOX

Explore local history with our sensory loans box, specially designed for pupils with Special Educational Needs and Disabilities. Featuring smells, sounds, costume and objects from Barnsley's past.

### **Accessibility**

Our workshops can be adapted to support any specific educational needs your group may have. Please let us know on booking if you would like to discuss any of these.



### **Arts Award**

Barnsley Museums supports Arts Award delivery and offers two Discover in a Day workshops – ‘Look, Make, Print’ at the Cooper Gallery and ‘Portraits and self-identity’ at the Cooper Gallery/Cannon Hall Museum, or as an outreach session. Your pupils will receive a bespoke Barnsley Museums logbook and we will process the administration and moderation of the award. Please contact us to discuss prices and availability for these sessions.

If you are delivering Arts Award in school, our other workshops can help fulfil certain elements. Please contact us to discuss details of your Award.



## Terms and Conditions

We can take a maximum of 36 children per class, per workshop which must include appropriate adult to child ratios. All adults are free of charge.

Please note that once you have filled in and returned your booking form, your booking is finalised. In the event that you wish to cancel a workshop after returning your form, the following cancellation fees will be charged:

If the trip is cancelled a month before the booking, no cancellation fee will be charged. If the trip is cancelled between one month and one week in advance of the booking, we will in the first instance look to rearrange the visit. If this is not possible, 50% of the workshop fee will be charged.

If the trip is cancelled within one week of the booking, we will in the first instance look to rearrange the visit. If this is not possible, the full workshop fee will be charged.

**Discounted rates for groups of fewer than 20 pupils are available.**

**Please contact us to discuss these.**







All trips and outreach sessions are led by a member of our highly experienced Learning team. Each activity or resource comes with a full Risk Assessment, and is tailored to the National Curriculum.

**Visit:** [www.barnsley-museums.com/schools](http://www.barnsley-museums.com/schools)

**or email:** [learning@barnsley.gov.uk](mailto:learning@barnsley.gov.uk)

**for more information or to make a booking.**

**All enquiries must be made at least 4 weeks in advance of the required date.**



Supported using public funding by  
**ARTS COUNCIL  
ENGLAND**

**BARNSELY MUSEUMS**



**BARNSELY**  
Metropolitan Borough Council