

# BARNSLEY MUSEUMS

# DISCOVER



[www.barnsley-museums.com/discover](http://www.barnsley-museums.com/discover)



**BARNSLEY**  
Metropolitan Borough Council



**Barnsley is fast becoming one of Yorkshire's most exciting places to visit and explore, just minutes from the M1 and with excellent public transport links too.**

**Whether you're looking for a trip out, short break or longer stay, there's so much for everyone to see and do.**

**We can't wait to welcome you!**

With picturesque countryside, beautiful parks and gardens, stately homes, industrial heritage, nature reserves, galleries, a wealth of public art, a brand new retail complex and bustling historic markets, people won't be short of things to do.

As well as a feast for the senses, Barnsley offers nourishment for body and soul, with cosy cafes, tempting tea rooms, atmospheric country pubs and fine dining in abundance - all served with a warm Yorkshire welcome!

Spectacular events, fantastic festivals, exciting exhibitions, farmers markets, makers fayres, theatre performances and more. Barnsley has it all.

Visitors will enjoy unforgettable days, have fantastic experiences and create magical memories.







## TOWN & MARKETS

**Here for over 800 years, experience the sights, the sounds, the smells and the bustle of Barnsley Markets.**

Our busy streets have fantastic shops, bars, cinemas and restaurants. Independent retailers, boutiques, vintage shops and big names mean Barnsley has everything you might want.

The Glass Works is our sparkling new 21st century addition, with its spectacular town square, high-street museums, restaurants, bowling alley, cinema and more for those special nights in town.

### **Discover:**

#### **The Glass Works**

theglassworks  
barnsley.com

#### **Barnsley Markets**

barnsley.gov.uk/  
markets

#### **The Alhambra**

alhambracentre.co.uk

#### **Victorian Arcade**

victorianarcade.co.uk



## SHOP TILL YOU DROP!

**Discover charming characterful places to shop with friends and family, all across Barnsley.**

Our fantastic local markets attract thousands. From Wombwell Market to Penistone's medieval market barn, each have wonderful wares to browse.

Hidden gems perfect for shopping, cakes and coffee include the high streets of our principal towns, Pot House Hamlet and the transformed workshops of the Elsecar New Yard.

### **Discover:**

#### **Elsecar - New Yard**

elsecar-heritage.com

#### **Barnsley District Markets**

barnsley.gov.uk/  
markets

#### **Pot House Hamlet**

pothousehamlet.  
co.uk

#### **Penistone**

visitpenistone.co.uk



BARNSELY MUSEUMS

## MAKING HISTORY

A proud history and amazing stories, our impressive museums tell the tales of Barnsley's fascinating past.

Packed with objects, collections, stories and memories, they make for a wonderful day out for all the family.

You'll find immersive experiences, films, interactives, digital displays and more too.

With changing exhibitions and fantastic activities, there's something new to see on every visit.

### Discover:

**Experience Barnsley Museum & Discovery Centre**

[experience-barnsley.com](http://experience-barnsley.com)

**Cannon Hall Museum**

[cannon-hall.com](http://cannon-hall.com)

**Elsecar Heritage Centre**

[elsecar-heritage.com](http://elsecar-heritage.com)

**Maurice Dobson Museum - Darfield**

(Open selected days only)  
[darfieldmuseum.co.uk](http://darfieldmuseum.co.uk)

**Cawthorne Jubilee Museum**

(Open selected days only)



BARNSELY LIBRARIES

## EXPLORE YOUR LIBRARY

Our libraries are welcoming hubs where you can meet, learn, discover and be inspired.

Whether you want to get online, join in with activities and events, borrow a book or need somewhere to study, you're sure to find something for you.

At the heart of Barnsley Libraries is Library @ The Lightbox, a vibrant space where everyone can connect, learn, create and relax.

Featuring state-of-the-art technology, this safe and exciting space is part of The Glass Works complex.

**Discover Barnsley Libraries at:**  
[barnsley.gov.uk/libraries](http://barnsley.gov.uk/libraries)

<b>Library @ the Lightbox, Barnsley</b>	<b>Mapplewell &amp; Staincross</b>
<b>Cudworth</b>	<b>Penistone</b>
<b>Darfield</b>	<b>Priory Campus</b>
<b>Dodworth</b>	<b>Roundhouse</b>
<b>Goldthorpe</b>	<b>Royston</b>
<b>Grimethorpe</b>	<b>Thurnscoe</b>
<b>Home Library Service</b>	<b>Wombwell</b>
<b>Hoyland</b>	<b>Worsbrough</b>





## IN THE FRAME

**In Barnsley you'll find art and culture around every corner and on every wall...**

Our galleries are exhilarating, range from the traditional to the contemporary, and bring high profile exhibitions by big-name artists here to Yorkshire.

They all support, nurture and celebrate local artists too, making them the perfect places to spot up-and-coming talent.

Pick up your own piece of art, in gallery shops and special selling exhibitions.

### **Discover:**

**The Cooper Gallery**

[cooper-gallery.com](http://cooper-gallery.com)

**The Civic**

[barnsleycivic.co.uk](http://barnsleycivic.co.uk)

**Cannon Hall**

[cannon-hall.com](http://cannon-hall.com)

**The New Yard, Elsecar**

[elsecar-heritage.com](http://elsecar-heritage.com)



## ON STAGE & SCREEN

**From plays and pantos, to toe-tapping music and big screen classics, there's much to enjoy in our theatres, cinemas and music venues.**

Each has special character, a unique atmosphere and thousands of regular patrons.

Their programmes are unique and will have you cheering, singing and enthralled in the aisles.

With two major music festivals too, Barnsley Live and Underneath the Stars, Barnsley really is the place to enjoy performances of every kind.

### **Discover:**

**The Civic**

[barnsleycivic.co.uk](http://barnsleycivic.co.uk)

**Lamproom Theatre**

[barnsleylamproom.com](http://barnsleylamproom.com)

**Dearne Playhouse**

[dearneplayhouse.co.uk](http://dearneplayhouse.co.uk)

**The Birdwell Venue**

[birdwellvenue.com](http://birdwellvenue.com)

**Penistone Paramount**

[penistoneparamount.co.uk](http://penistoneparamount.co.uk)

**The Parkway Cinema**

[barnsley.parkwaycinemas.co.uk](http://barnsley.parkwaycinemas.co.uk)



## DISCOVER THE BEAUTY

**Enjoy the wonderful scenery and breath-taking architecture of our historic houses, parks, gardens and medieval priory.**

History and stunning surroundings combine to beautiful and dramatic effect at Cannon Hall, Wentworth Castle, Monk Bretton Priory and Wortley Hall.

Each have their own special charm.

Our country houses nestle in picturesque landscapes, gardens and rolling parklands.

Step into the lives of the medieval monks, wealthy aristocrats and dynamic industrialists who created their splendour.

Spend inspiring days and take in spectacular Yorkshire views.

### Discover:

**Elsecar - New Yard**

[elsecar-heritage.com](http://elsecar-heritage.com)

**Cannon Hall Museum Park and Gardens**

[cannon-hall.com](http://cannon-hall.com)

**Wentworth Castle Gardens**

[nationaltrust.org.uk](http://nationaltrust.org.uk)

**Monk Bretton Priory**

[english-heritage.org.uk](http://english-heritage.org.uk)

**Wortley Hall (Hotel & Gardens)**

[wortleyhall.org.uk](http://wortleyhall.org.uk)



## WILD & WONDERFUL

**Whether you're after windswept walks, magnificent moorlands, scenic landscapes or windows into wildlife, Barnsley has it all.**

There's no better way to explore our extraordinary natural landscapes than by footpaths, cycle ways and horse-riding trails, all linked up by the Trans Pennine Trail.

They'll lead you to picturesque countryside, of spectacular views, with an abundance of birds, deer, fish and other wildlife.

Take time to enjoy our nature reserves, reservoirs, country parks and explore up into the breathtaking East Peak.

### Discover:

**RSPB Old Moor**

[rspb.org.uk](http://rspb.org.uk)

**Worsbrough Mill & Country Park**

[worsbrough-mill.com](http://worsbrough-mill.com)

**Langsett Reservoir**

[yorkshirewater.com](http://yorkshirewater.com)

**Rabbit Ings Nature Reserve**

[thelandtrust.org.uk](http://thelandtrust.org.uk)

**Barnsley Nature Reserves**

[barnsley.gov.uk/services/parks-and-open-spaces/wildlife-conservation-and-biodiversity/](http://barnsley.gov.uk/services/parks-and-open-spaces/wildlife-conservation-and-biodiversity/)





## DOWN AT THE FARM

**Barnsley is surrounded by rural beauty, and a rich heritage of farming and agriculture that you can still enjoy and appreciate today.**

Visit farm attractions at Cannon Hall and Wigfield to meet new animal friends.

Farm shops across Barnsley sell fine fresh foods, from fresh meats to dainty treats.

Head to Worsbrough Mill to watch its waterwheel, traditional milling and buy flour or freshly baked bread to take home.

Each September, thousands gather for the famous Penistone Show, a celebration of farming, agriculture and rural life. It's a real highlight of Barnsley's calendar.

### Discover:

#### **Cannon Hall Farm**

[cannonhallfarm.co.uk](http://cannonhallfarm.co.uk)

#### **Wigfield Farm**

[barnsley.ac.uk/shops-services/wigfield-farm](http://barnsley.ac.uk/shops-services/wigfield-farm)

#### **Penistone Show**

[penistoneshow.com](http://penistoneshow.com)

#### **Worsbrough Mill, Mill Shop & Country Park**

[worsbrough-mill.com](http://worsbrough-mill.com)

#### **Rob Royd Farm Shop**

[robroydfarmshop.co.uk](http://robroydfarmshop.co.uk)



## INDUSTRY & INNOVATION

**Barnsley led a great industrial age, leaving astonishing places to discover.**

Elsecar - a village transformed by aristocrats into an international centre of iron and coal, home to the world's oldest steam engine still in place.

Wortley Top Forge - the oldest water-driven iron forge in the world.

Rockley - Iron furnace and towering engine house dating back to 1698 and 1813 respectively.

Barnsley Main Colliery - One of our very last, and the country's most magnificent, colliery headgears.

### Discover:

#### **Elsecar**

[elsecar-heritage.com](http://elsecar-heritage.com)

#### **Hemingfield (Elsecar Low) Colliery**

(Open selected days only)  
[hemingfieldcolliery.org](http://hemingfieldcolliery.org)

#### **Wortley Top Forge**

(Open selected days only)  
[topforge.co.uk](http://topforge.co.uk)

#### **Barnsley Main Colliery**

[facebook.com/barnsleymainheritagegroup](https://facebook.com/barnsleymainheritagegroup)

#### **Rockley Furnace and Engine House**

[syhs.co.uk](http://syhs.co.uk)





## GETTING SPORTY

**If you're into sport, whether from the square or the sidelines, on the pitch or in the pool, there's plenty to get you going in Barnsley!**

Shaw Lane is the home of amateur sport in Barnsley, there's always lots going on, and Oakwell rings out to the sound of the Reds.

Our sports clubs welcome visitors and guests, including Barnsley's golf clubs, gyms and our sporting complex close to town, The Metrodome.

The Trans Pennine Trail is always busy with walkers, cyclists and riders, local and from far and wide.

Our parks are packed with things to do, or enjoy a gentle stroll, peace, quiet and time to think.

### Discover:

#### **The Metrodome**

[metrodomes.org.uk](http://metrodomes.org.uk)

#### **Barnsley Football Club - Oakwell**

[barnsleyfc.co.uk](http://barnsleyfc.co.uk)

#### **Silkstone Golf Club**

[silkstonegolfclub.co.uk](http://silkstonegolfclub.co.uk)

#### **Barnsley Golf Club - Staincross**

[barnsleygolfclub.co.uk](http://barnsleygolfclub.co.uk)

#### **Trans Pennine Trail**

[transpenninetrail.org.uk](http://transpenninetrail.org.uk)

#### **Barnsley Parks & Open Spaces**

[barnsley.gov.uk/services/parks-and-open-spaces/](http://barnsley.gov.uk/services/parks-and-open-spaces/)



## FOOD AND DRINK

**Award-winning pubs, bars, restaurants and cafes, Barnsley has plenty to tantalise your taste-buds!**

Our traditional tea rooms and cafes are perfect for homemade baked breads, tasty pies, pastries and tempting treats.

Barnsley's restaurants offer mouth-watering menus to suit every palate, including the speciality 'Barnsley Chop', which will satisfy even the biggest appetite.

Take time to relax in an award-winning bar or one of the friendly country pubs found in our picturesque villages.

Try a pint of quality ale, brewed in the one of our region's thriving breweries. They offer fascinating tours and the chance to sample freshly brewed craft ales too.





# PLACES TO STAY & NIGHTS AWAY

**Whether you're coming to Barnsley to enjoy shopping trips, family visits, nights out or days of discovery, it's always worth staying over.**

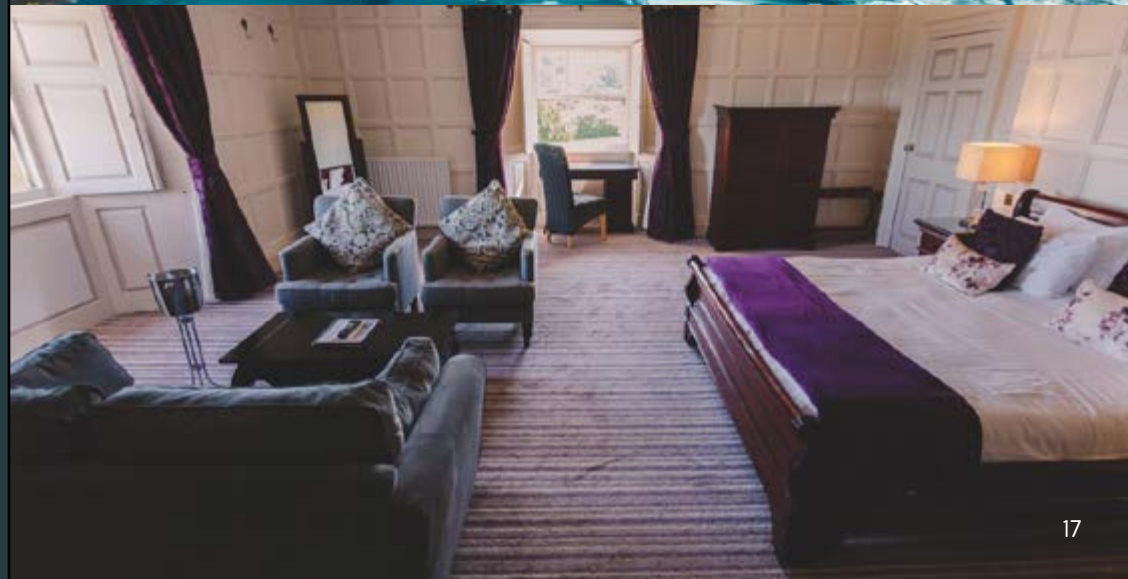
After busy days and buzzing nights, it's time to relax and unwind in one of our hotels and spas.

Hip or historic, our hotels offer unique experiences, spas and luxurious stays, or budget beds for trips long and short.

Our campsites are the perfect place to pitch up, whether in tent, caravan or motorhome.

For more details visit:

[www.visit-barnsley.com/where-to-stay](http://www.visit-barnsley.com/where-to-stay)





# GET INVOLVED

There are lots of ways that you can get involved, volunteer and make a difference to your communities and those around you.

Whatever your interests, amount of time you can offer, and with any level of experience, there are always exciting opportunities to volunteer.

**Find out more by contacting your local area team or Barnsley CVS at [BarnsleyCVS.org.uk](http://BarnsleyCVS.org.uk) or 01226 770610**

# GET ACTIVE & MOVING

It's easy to start think that getting active and moving has to be something big like going to a gym or running a marathon.

That's great for some people, but being active and moving can mean different things too.

The important thing is that being active and moving is right for you, is something you enjoy and that fits into your daily life.

Even little changes to your daily routines can have a big impact on you and the people around you.

**Find your move at [www.barnsleywhatsyourmove.co.uk](http://www.barnsleywhatsyourmove.co.uk)**

# GET DIGITAL

Digital means using devices, networks, data and technology to work, play and create. It's becoming increasingly important to more and more parts of our lives.

From paying bills and filling in forms, to meeting people and watching films, more and more is done online.

There's completely free support to help you get online, enjoy this new, digital world and discover new skills.

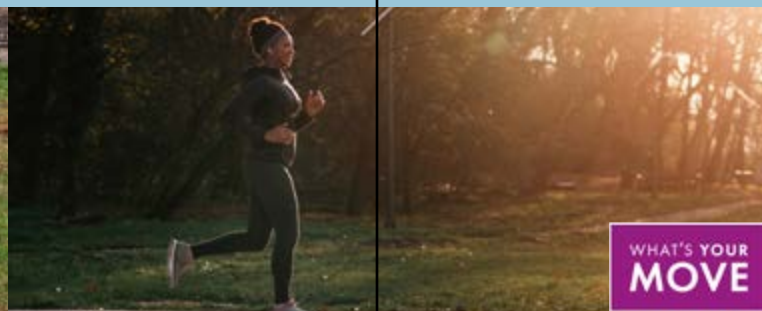
**Contact Barnsley's Digital Champions on (01226) 773555 or visit [barnsley.gov.uk/getonline](http://barnsley.gov.uk/getonline)**

# GET LEARNING

Barnsley has many opportunities to learn new skills, undertake training and gain qualifications.

Different types of courses and activities are available, to suit everyone, no matter what your previous experience is, or what qualifications you already have.

- **Contact the Adult Skills and Community Learning Team on [adultlearning@barnsley.gov.uk](mailto:adultlearning@barnsley.gov.uk)**
- **Find out more about Northern College at [northern.ac.uk](http://northern.ac.uk)**
- **Find out about Barnsley College here [www.barnsley.ac.uk/our-departments/adult-and-part-time-courses/](http://www.barnsley.ac.uk/our-departments/adult-and-part-time-courses/)**







# BARNSELEY MUSEUMS

Barnsley Museums are proud to look after and share six amazing museums and heritage sites:

- Experience Barnsley Museum & Discovery Centre
- Worsbrough Mill Museum & Country Park
- Cannon Hall Museum, Park & Gardens
- Elsecar Heritage Centre
- The Cooper Gallery
- [BarnsleyMuseums@TheGlassWorks](mailto:BarnsleyMuseums@TheGlassWorks)

Follow us on Facebook, Instagram and Twitter



[www.barnsley-museums.com](http://www.barnsley-museums.com)



Supported using public funding by  
**ARTS COUNCIL  
ENGLAND**



**BARNSELEY MUSEUMS**

