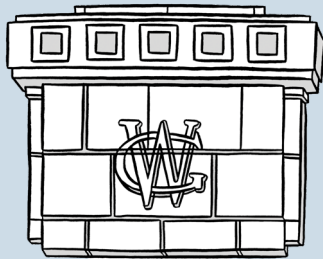




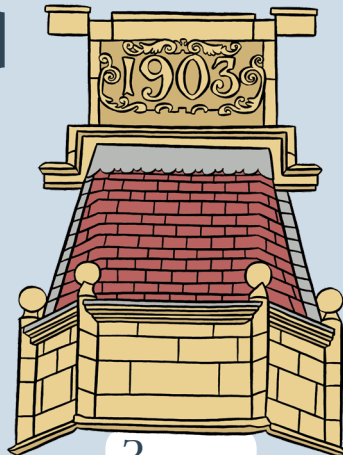
1

ELDON STREET

History hunt



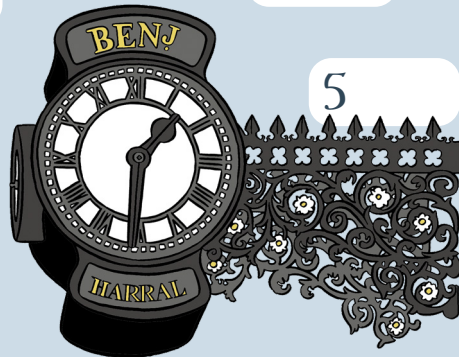
2



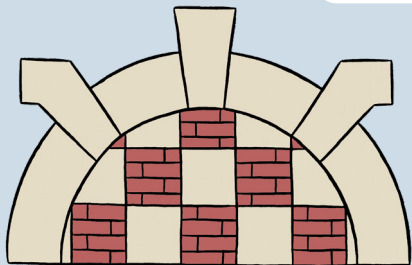
3



4



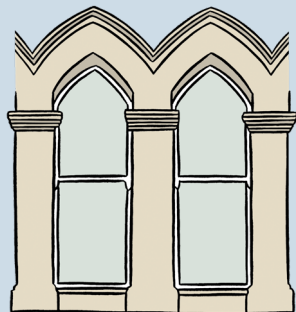
5



6

7

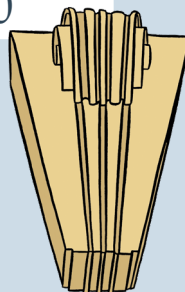
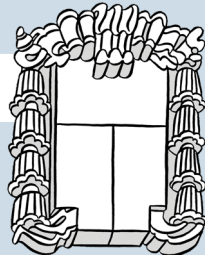
8



9



10



Look up as you walk along Eldon Street! Can you spot all of these decorative details on the buildings between Regent Street and Market Hill? Tick them when you find them.



Historic England



ELDON STREET

History hunt quiz

1 This is a carving of Henry Harvey who founded the Public Hall (now the Civic) in 1877. What is the lady to the left holding in her hand?

2 These are the initials of local photographer Warner Gothard, who built this art deco block of shops and offices in 1927. How many businesses use the building today?

3 This tower was part of the Yorkshire Penny Bank on the corner of Market Hill. Can you spot the YPB initials anywhere?

4 This sign hangs above the entrance to the Victorian Arcade. Study the pavement - what year did shops start trading here?

5 This clock belonged to local jeweller and clockmaker Benjamin Harral. How many faces does it have?

6 This pretty building used to be a newsagent shop. How many times does this checkerboard pattern appear above the windows?

7 How many lions can you count guarding the former Queen's Hotel on the corner of Regent Street?

8 This decorative building was part of Benjamin Harral's clock and jewellery workshops. How many windows does it have overlooking Eldon Street?

9 These Gothic windows were very fashionable when this building was designed in the 1870s. What business is here now?

10 This carved stone scroll sits at the very top of Eldon Buildings. What year was it built?

Find the answers on our website: www.barnsley.gov.uk/HAZ